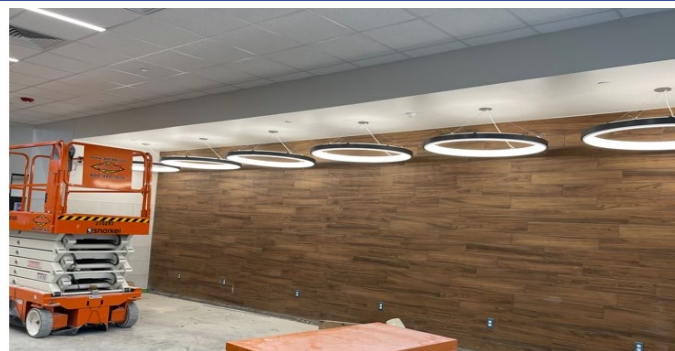




Building: Booster pump installation in progress.



Building: Ovation cloud installation continues in auditorium.



Building: Area G lighting installation in progress at Commons.



Site: South parking lot concrete being placed and finished.

February Week 4 - Major Activities:

- Decorative Metal Handrails
- Roof Pre-Punch Areas A/B/C/D/E/F
- Closeout Punchlist Areas A/B, C/D, E/F, M/N/P
- Commissioning Areas A-F, M/N/P
- T/F/P Furrdown Above Area G Learning Stairs
- Terrazzo Treads Area E Learning Stairs
- Terrazzo Treads Media Center and Mainstreet
- Concrete Polishing Commons Area
- Column Metal Wrap Media and Commons
- Kitchen Punchlist Work and Equipment Startup
- Final Paint and Rubber Base Area H
- Pre-Punch Area G/H/L
- Drop Ceiling Tile in High Ceilings Area J
- Install PLAM in Auditorium Lobby
- Install Display Cases at Auditorium Lobby
- Theatre Curtain Rigging Install
- Irrigation
- Sidewalks/Paving
- Home Grandstands at Football
- Metal Wall Panels at PB
- All Ceiling Fixtures at Field House
- RTU start up at Field House

Percent Design Complete: 100%

Next Week's Major Activities:

- Decorative Metal Handrails
- Roof Pre-Punch Areas A/B/C/D/E/F
- Closeout Punchlist Areas A/B, C/D, E/F, M/N/P
- Final Punch C/D Main Street
- Commissioning Areas M/N/P
- Water Testing Areas D/E/F north Elevation
- Ceiling Grid Above Area G Learning Stairs
- Terrazzo Treads Media Center and Mainstreet
- Concrete Polishing Commons Area
- Column Metal Wrap Media and Commons
- Kitchen Punchlist Work and Equipment Startup
- Final Paint and Rubber Base Area H
- Pre-Punch Area G/H/L
- Drop Ceiling Tile and Final Paint Area J
- Install PLAM in Auditorium Spotlight Booths
- Frame/Sheetrock Radius Walls at Stage
- Theatre Curtain Rigging Install
- Irrigation
- Sidewalks/Paving
- Home Grandstands at Football
- Flooring at PB and Field House
- Ceramic Tile at Showers at Field House

End of January Construction Complete: 87%

(% complete includes Building & Stadium Expansion)