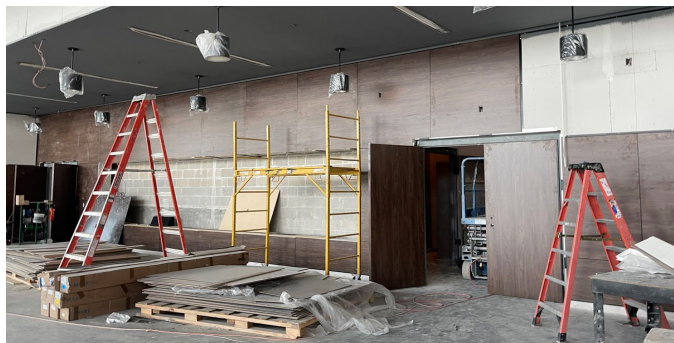




Site: Landscaping in progress.



Building: Concrete polishing in progress at Commons Area.



Building: PLAM installation in progress at Auditorium Lobby



Building: Ovation cloud installation in progress at front of stage.

February Week 3 - Major Activities:

- Closeout Punchlist Areas A/B, E/F, M/N/P
- Commissioning Areas M/N/P
- Light Programming M/N/P and Exterior
- Water Testing Areas C/D/E/F South Elevation
- T/F/P Furrdown Above Area G Learning Stairs
- Flooring and Equipment in Grab and Go
- Terrazzo Treads Area E Learning Stairs
- Concrete Polishing Commons Area
- Column Metal Wrap Media and Commons
- Kitchen Punchlist Work and Equipment Startup
- Final Paint and Rubber Base Area H
- Pre-Punch Area H
- Pre-Punch Area L
- Drop Ceiling Tile in High Ceilings Area J
- Install PLAM in Auditorium Lobby
- Theatre Curtain Rigging Install
- Irrigation
- Sidewalks/Paving
- Visitor Grandstands at Football
- Metal Wall Panels at PB
- Ceramic Tile at PB
- Casework at PB

Percent Design Complete: 100%

Next Week's Major Activities:

- Decorative Metal Handrails
- Roof Pre-Punch Areas A/B/C/D/E/F
- Closeout Punchlist Areas A/B, E/F, M/N/P
- Commissioning Areas M/N/P
- Water Testing Areas D/E/F north Elevation
- T/F/P Furrdown Above Area G Learning Stairs
- Terrazzo Treads Area E Learning Stairs
- Terrazzo Treads Media Center and Mainstreet
- Concrete Polishing Commons Area
- Column Metal Wrap Media and Commons
- Kitchen Punchlist Work and Equipment Startup
- Final Paint and Rubber Base Area H
- Pre-Punch Area H
- Pre-Punch Area L
- Drop Ceiling Tile in High Ceilings Area J
- Install PLAM in Auditorium Lobby
- Theatre Curtain Rigging Install
- Irrigation
- Sidewalks/Paving
- Home Grandstands at Football
- Metal Siding at PB
- Ceramic Tile at Showers at Field House

End of January Construction Complete: 87%

(% complete includes Building & Stadium Expansion)