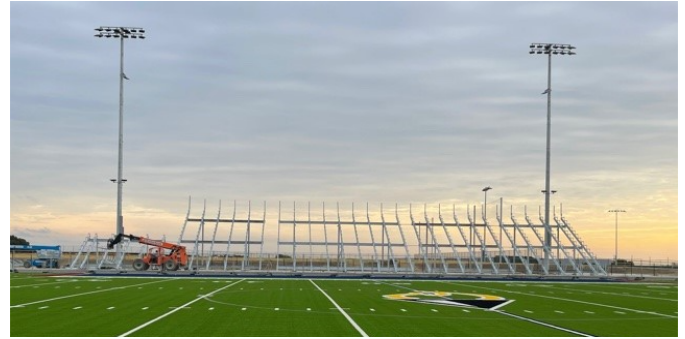
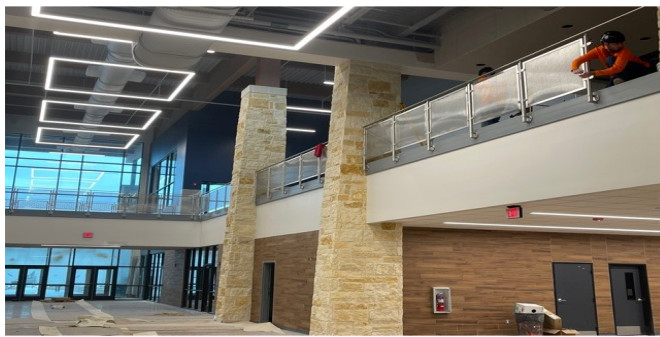




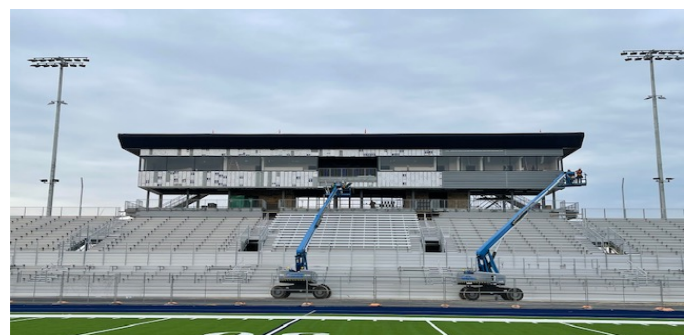
Site: City sidewalk along Chaparral Road in progress.



Site: Football Stadium visitors bleacher installation in progress.



Building: Decorative railing panel system installation nearing completion in area C/D.



Site: Pressbox metal wall panel installation in progress.

February Week 1 - Major Activities:

- Trim Out MDF
- Final Punch Athletics (Locker Areas)
- Sheetrock Furrdown Above Area G Learning Stairs
- Terrazzo Treads Area E Learning Stairs
- Commissioning Areas A-F
- Startup Remaining RTUs (Areas J and K)
- Continue RFI 196 in Dance Room and Start Area J
- Complete Flooring at D2 Above Area G Learning Stairs
- Interior Column Metal Wrap C/D Mainstreet
- Dance Room Flooring
- Final Paint Area L
- Pour Concrete Topping Slab in Fine Arts Mainstreet
- Theatre Curtain Rigging Layout
- Theatre Aisle Lighting Focus
- Start Ovation Cloud Installation
- Sheetrock Ceilings at Field House
- Tape/Float/Paint at Field House
- Irrigation
- Sidewalks/Paving
- Visitor Grandstands at Football
- Elevator Installation at PB
- Metal Wall Panels at PB

Percent Design Complete: 100%

Next Week's Major Activities:

- Trim Out MDF
- Final Punch Kitchen
- Final Punch C2/D2
- Water Testing Areas C/D and Complete Areas A/B
- T/F/P Furrdown Above Area G Learning Stairs
- Terrazzo Treads Area E Learning Stairs
- Terrazzo Treads Media Center and Mainstreet
- Commissioning Areas A-F
- Continue RFI 196 in Area J
- Complete Flooring at D2 Above Area G Learning Stairs
- Interior Column Metal Wrap Media and Commons
- Pre-Punch Area L
- Drop Ceiling Tile in High Ceilings Area J
- Overhead Roughin Auditorium Lobby
- Install PLAM in Auditorium Lobby
- Theatre Curtain Rigging Install
- Tape/Float/Paint Ceilings at Field House
- Elevator Installation at PB
- Irrigation
- Sidewalks/Paving
- Visitor Grandstands at Football
- Metal Wall Panels at PB

End of January Construction Complete: 87%

(% complete includes Building & Stadium Expansion)