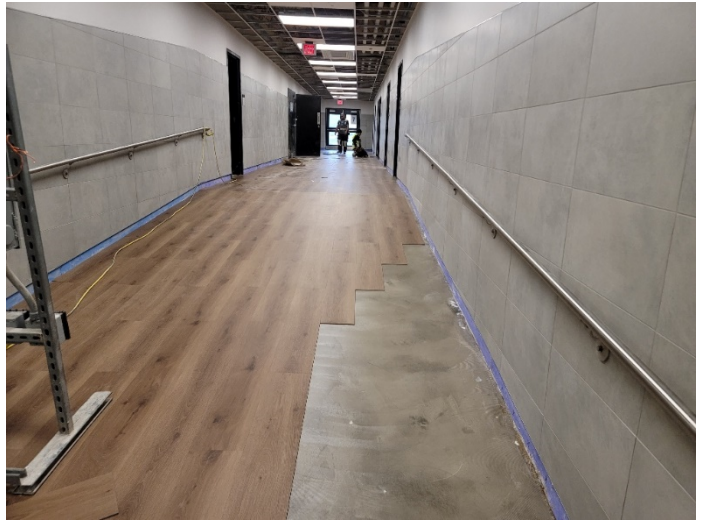




**Area L:** Whirlpool installation in progress.



**Area M:** Flooring installation in progress.



**Area D:** Ceiling framing in progress.



**Area T:** SOG reinforcement installation in progress.

### August 28<sup>th</sup> week Major Activities:

- Continue MEP rough-in in Area P,M,N, and D.
- Continue painting in Area P,M,N,D.
- Finish ceiling tile installation in Area P.
- Continue metal stud framing in Area D.
- Start sheetrock installation in Area D.
- Continue ceiling grid trimout in Areas M,N.
- Continue flooring in Area M,N,P.
- Finish Area M casework installation.
- Start tape/float at Auditorium.
- Pour Area T foundation.
- Continue paving installation at new Band Practice field.
- 

Phase 1&2 Design Percent Complete – 100%

### Next Week's Major Activities:

- Continue MEP rough-in in Area P,M,N, and D.
- Continue painting in Area P,M,N,D.
- Continue metal stud framing in Area D.
- Continue sheetrock installation in Area D.
- Continue ceiling grid trimout in Areas M,N.
- Continue flooring in Area M,N,P.
- Install MB/TB in Area M,N,P.
- Finish tape/float at Auditorium.
- Continue sidewalk installation at new Band Practice field.
- Continue paving installation at Area M&N parking lot.

Construction Percent Complete – Phase 1: 99%; Phase 2: 73%