

2024-2025 SCHOOL YEAR REZONING

Killeen Independent School District



Why Are We Rezoning?



DR. JIMMIE DON AYCOCK MIDDLE SCHOOL

In Fall 2024, the District will open Dr. Jimmie Don Aycock Middle School, which has been designed to accommodate 1,350 students.



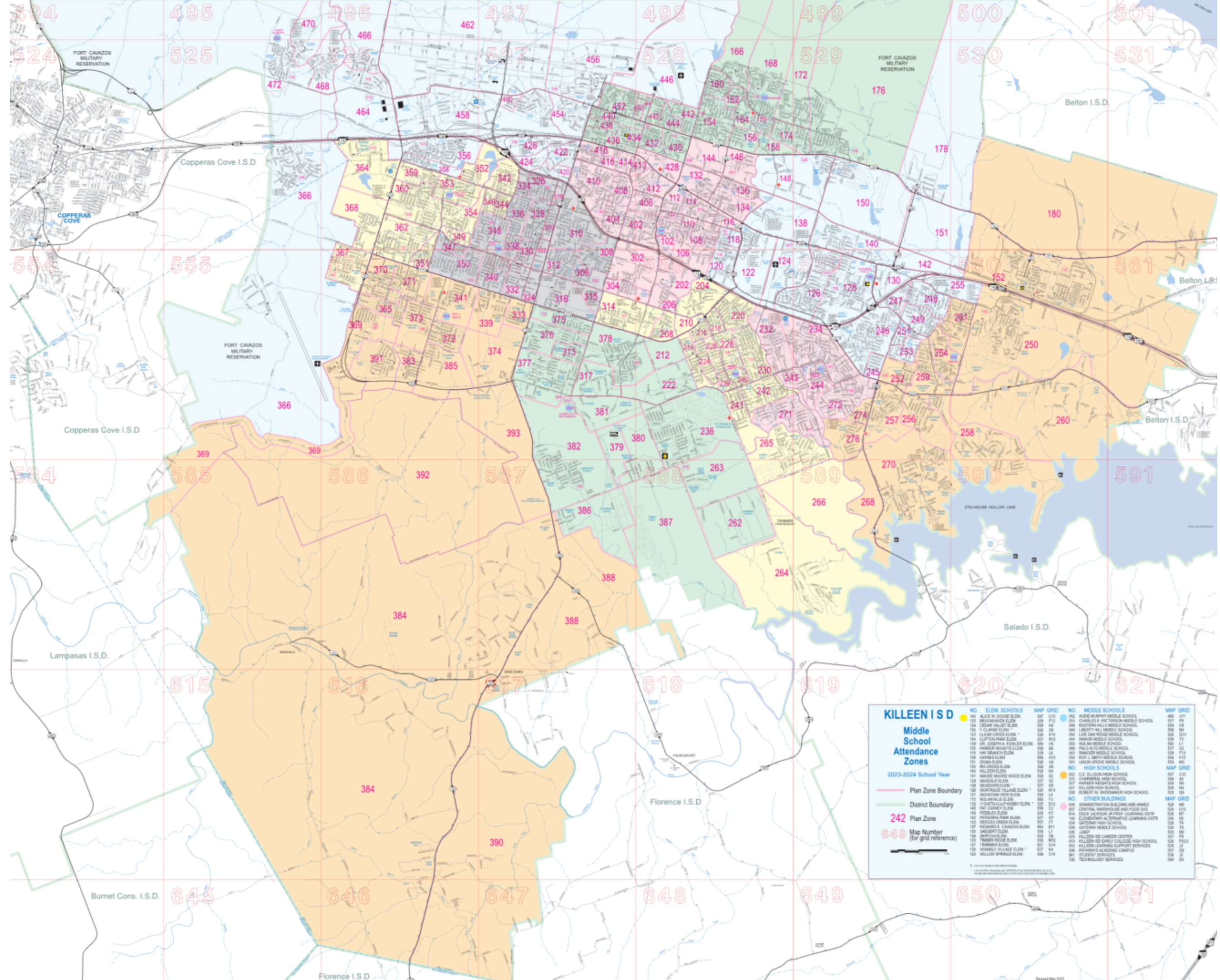
DISTRICT GROWTH

District growth along Warriors Path has led for a need to create additional building capacity within Nolanville Elementary School.

DR. JIMMIE DON AYCOCK MIDDLE SCHOOL



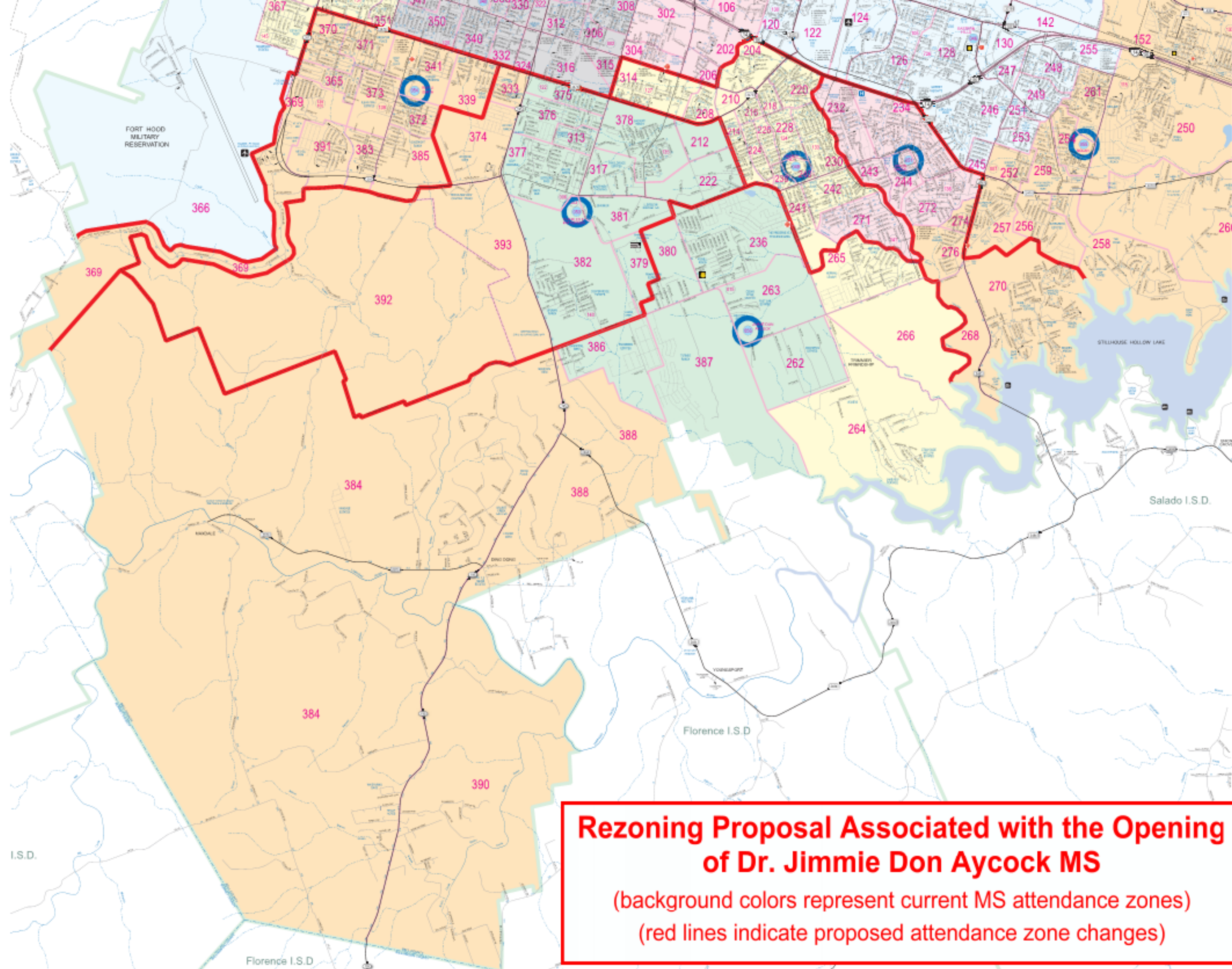
Current Middle School Zoning



Proposed Middle School Rezoning

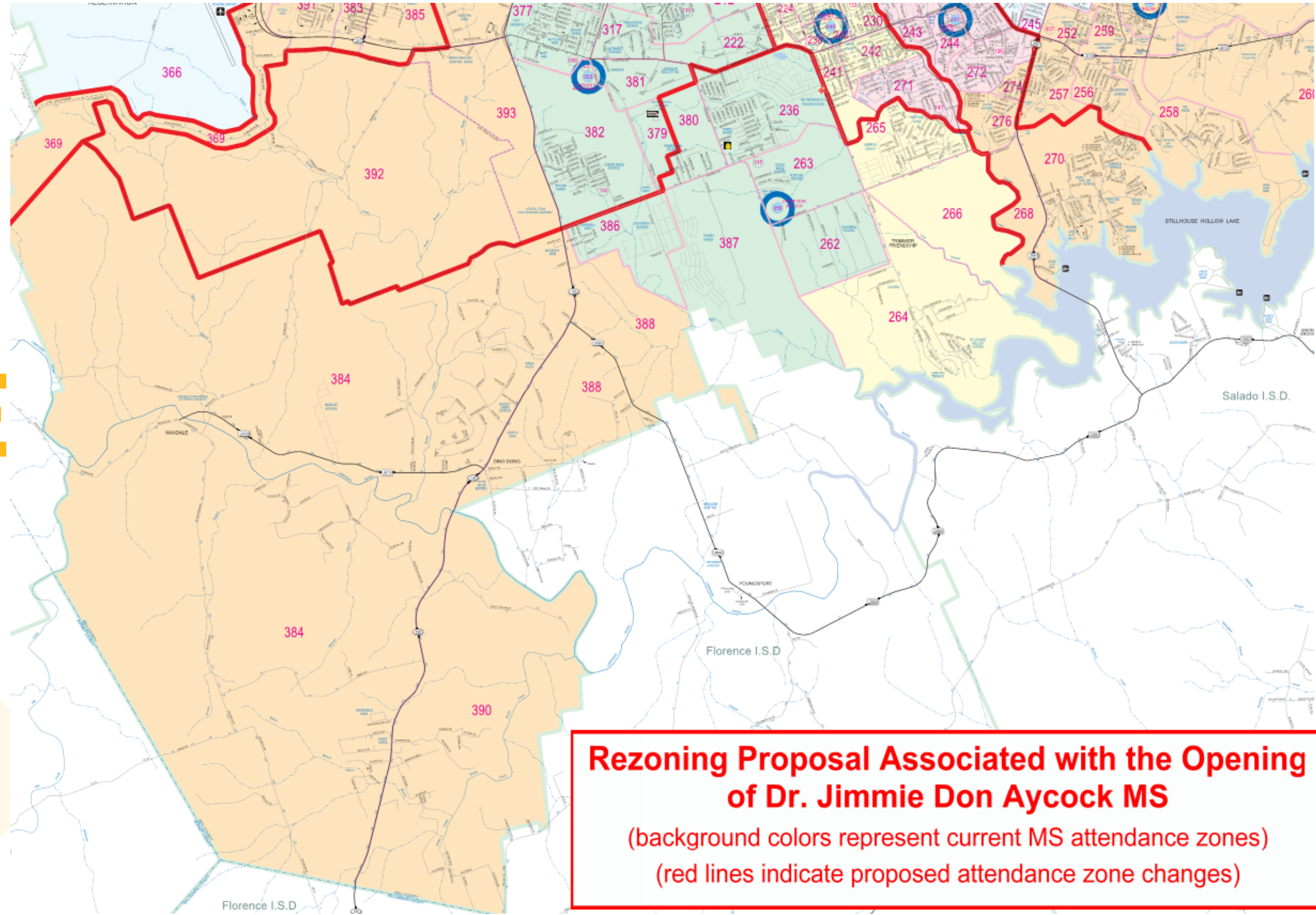
Affected schools:

- Charles Patterson MS
- Liberty Hill MS
- Nolan MS
- Roy J. Smith MS
- Union Grove MS

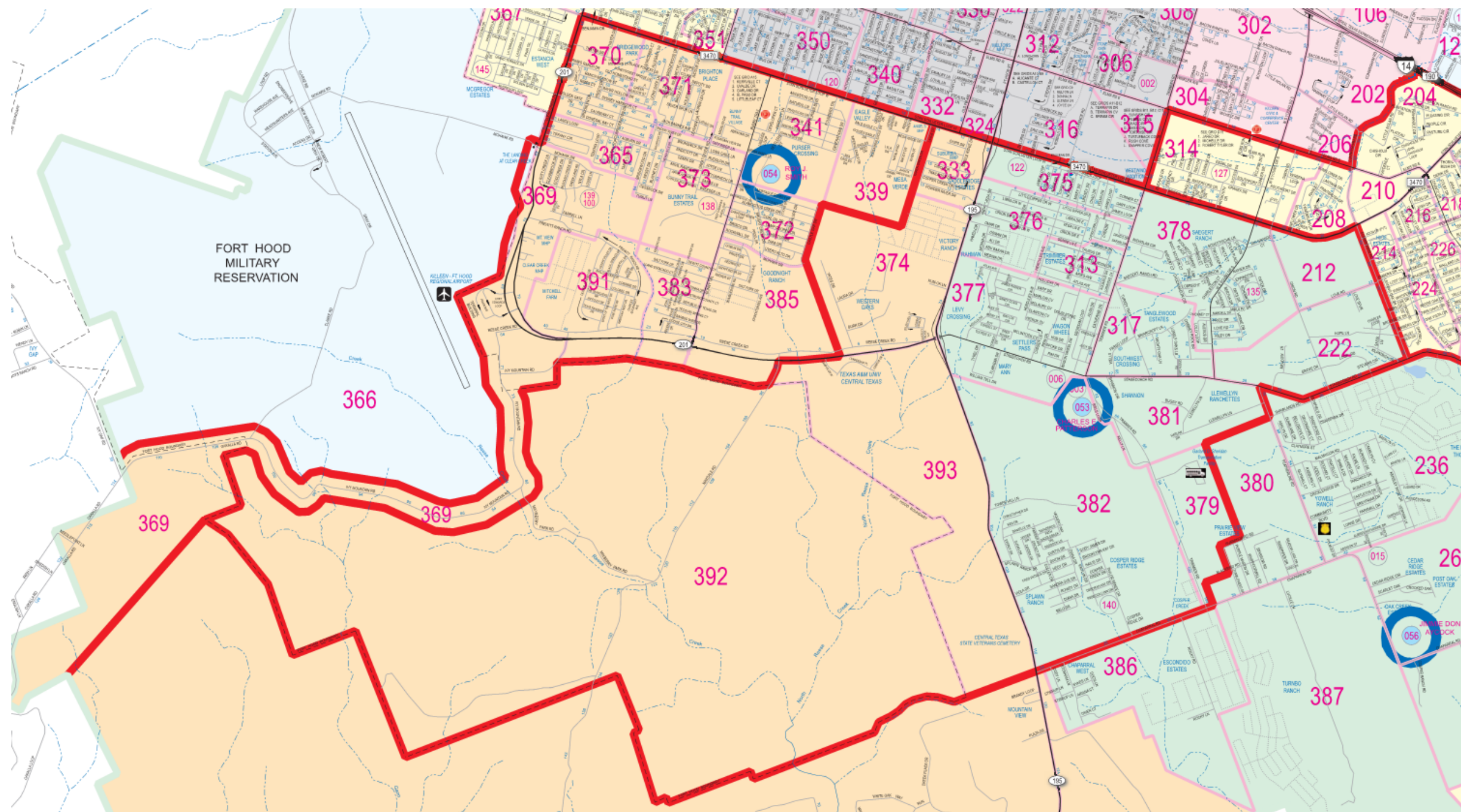


Rezoning Proposal Associated with the Opening of Dr. Jimmie Don Aycock MS
(background colors represent current MS attendance zones)
(red lines indicate proposed attendance zone changes)

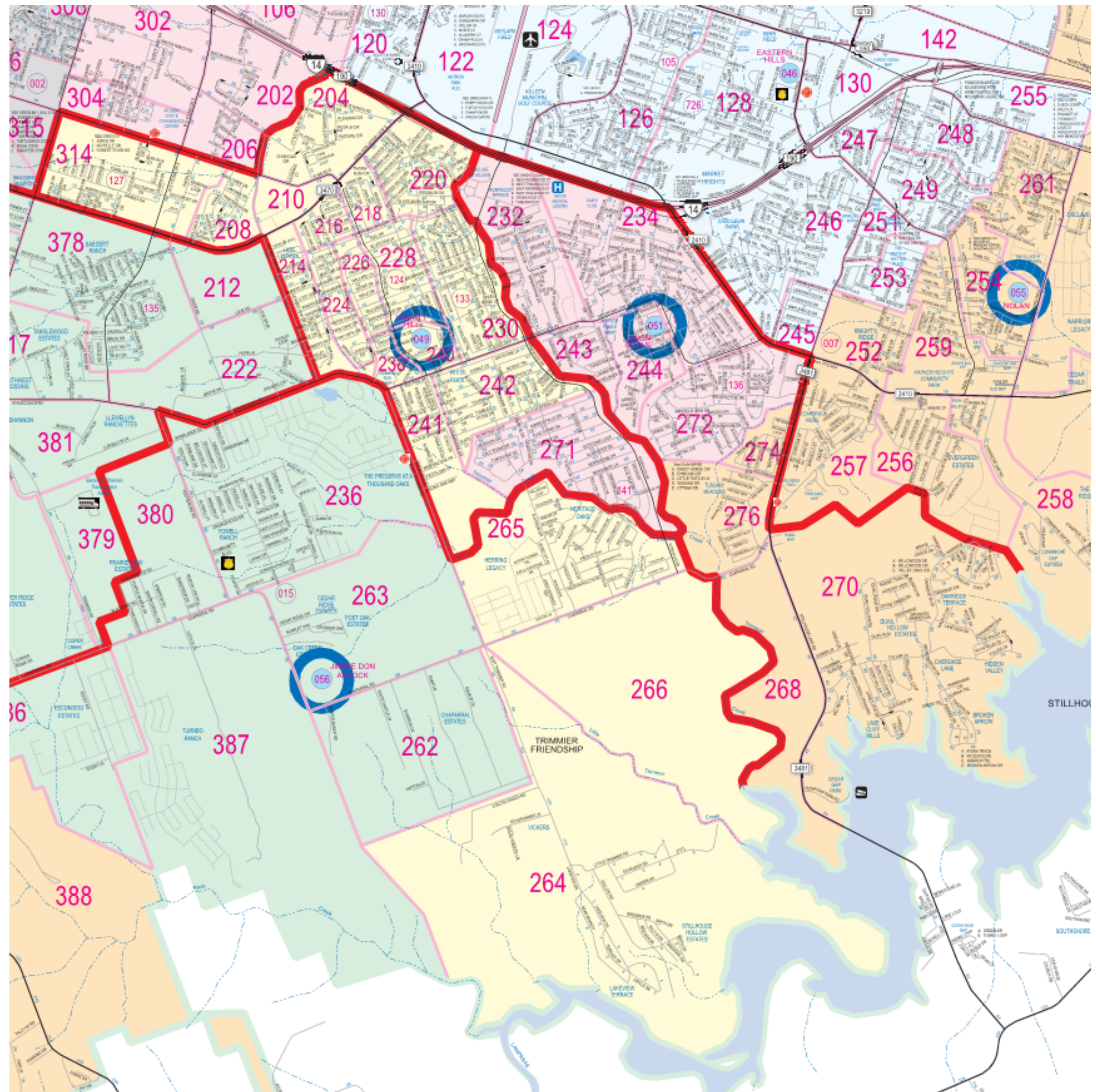
DR. JIMMIE DON AYCOCK MIDDLE SCHOOL



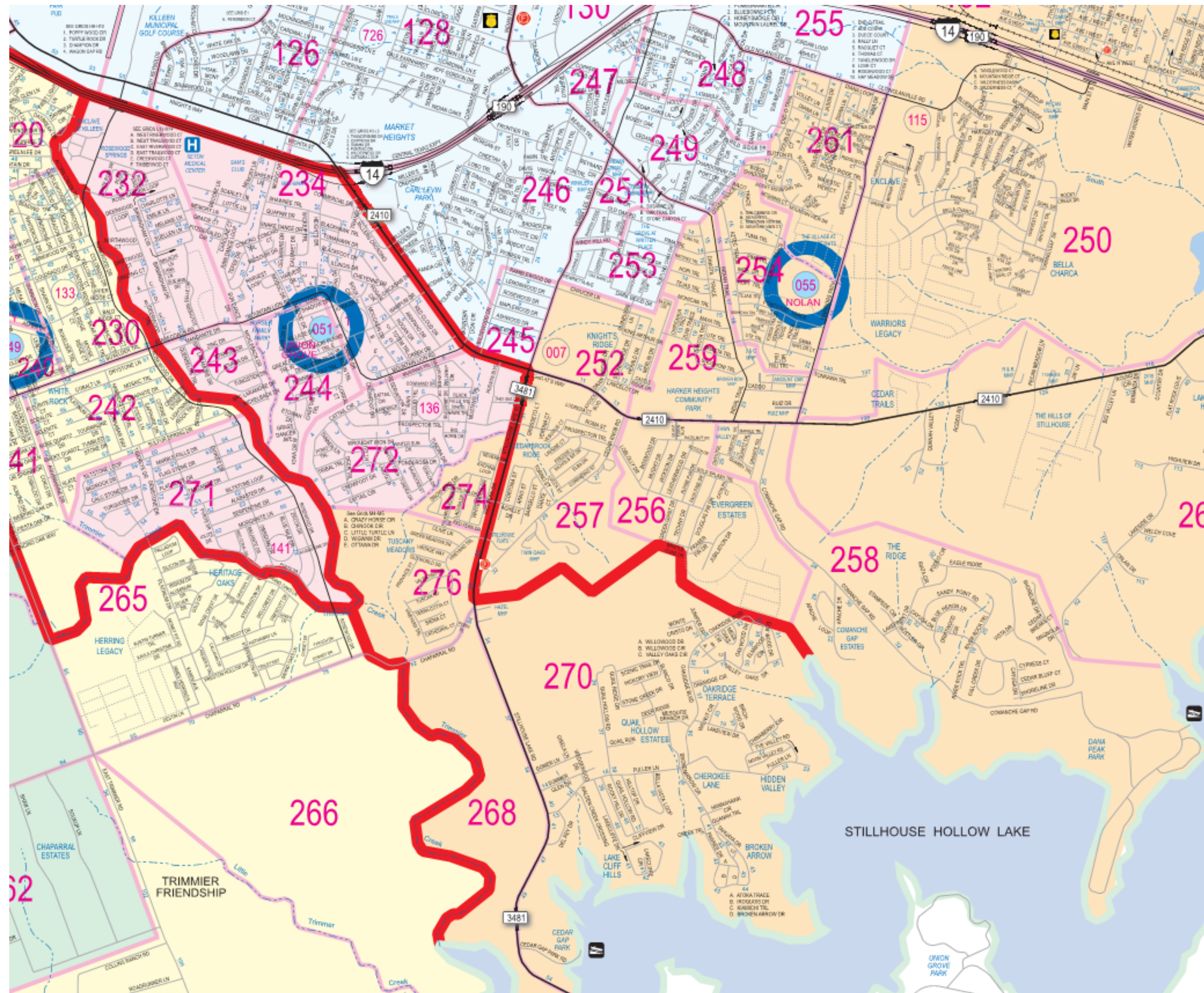
RJSMS TO CPMS



UGMS TO LHMS



NMS TO UGMS





Proposed Middle School Rezoning

	TOTAL	JDAMS	CPMS	LHMS	NMS	RJSMS	UGMS
School Year 2023-2024 Maximum Enrollment	4,881		1,028	721	1,170	1,287	675
Building Capacity	5,400		975	850	1,350	1,350	875
School Year 2023-2024 Available Capacity	519		(53)	129	180	63	200
School Year 2024-2025 Projected Enrollment	4,834	467	762	742	949	1,155	759
Planning Capacity	6,750	1,350	975	850	1,350	1,350	875
School Year 2024-2025 Est. Available Capacity	1,916	883	213	108	401	195	116

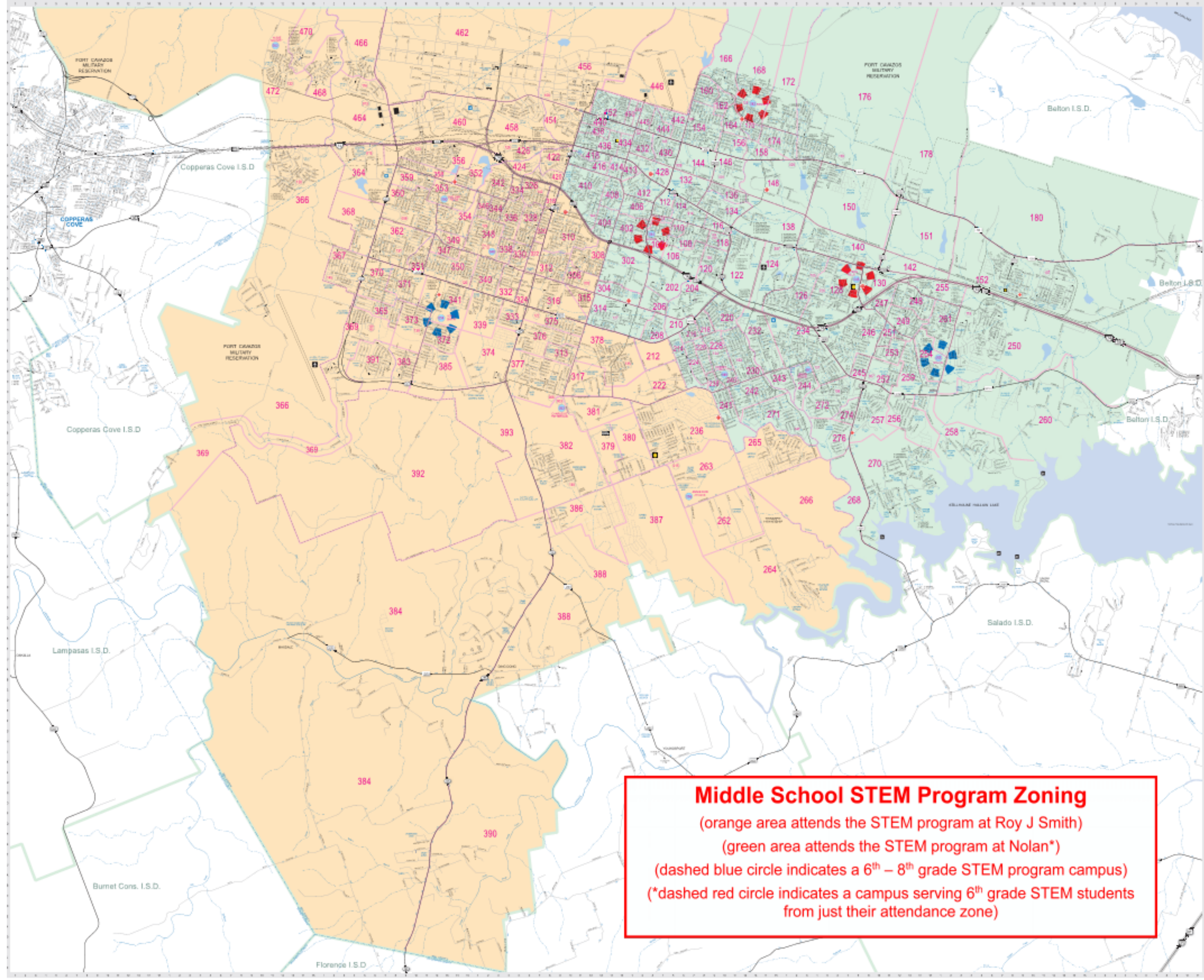
Middle School STEM Campuses

Roy J. Smith MS

- Audie Murphy MS
- Charles E. Patterson MS
- Dr. Jimmie Don Ayccock MS
- Live Oak Ridge MS
- Palo Alto MS

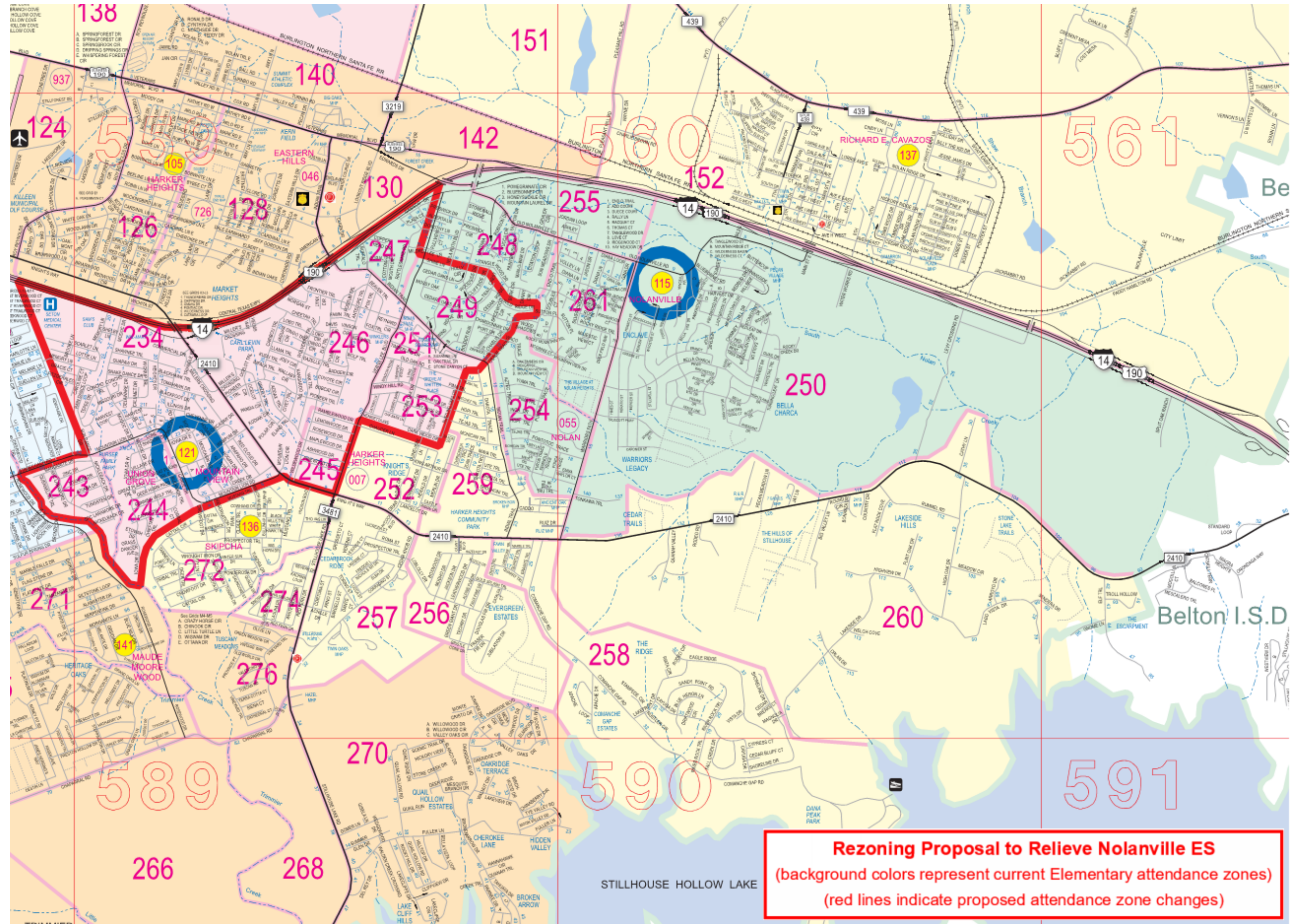
Nolan MS

- Eastern Hills MS
- Liberty Hill MS
- Manor MS
- Union Grove MS
- Rancier MS

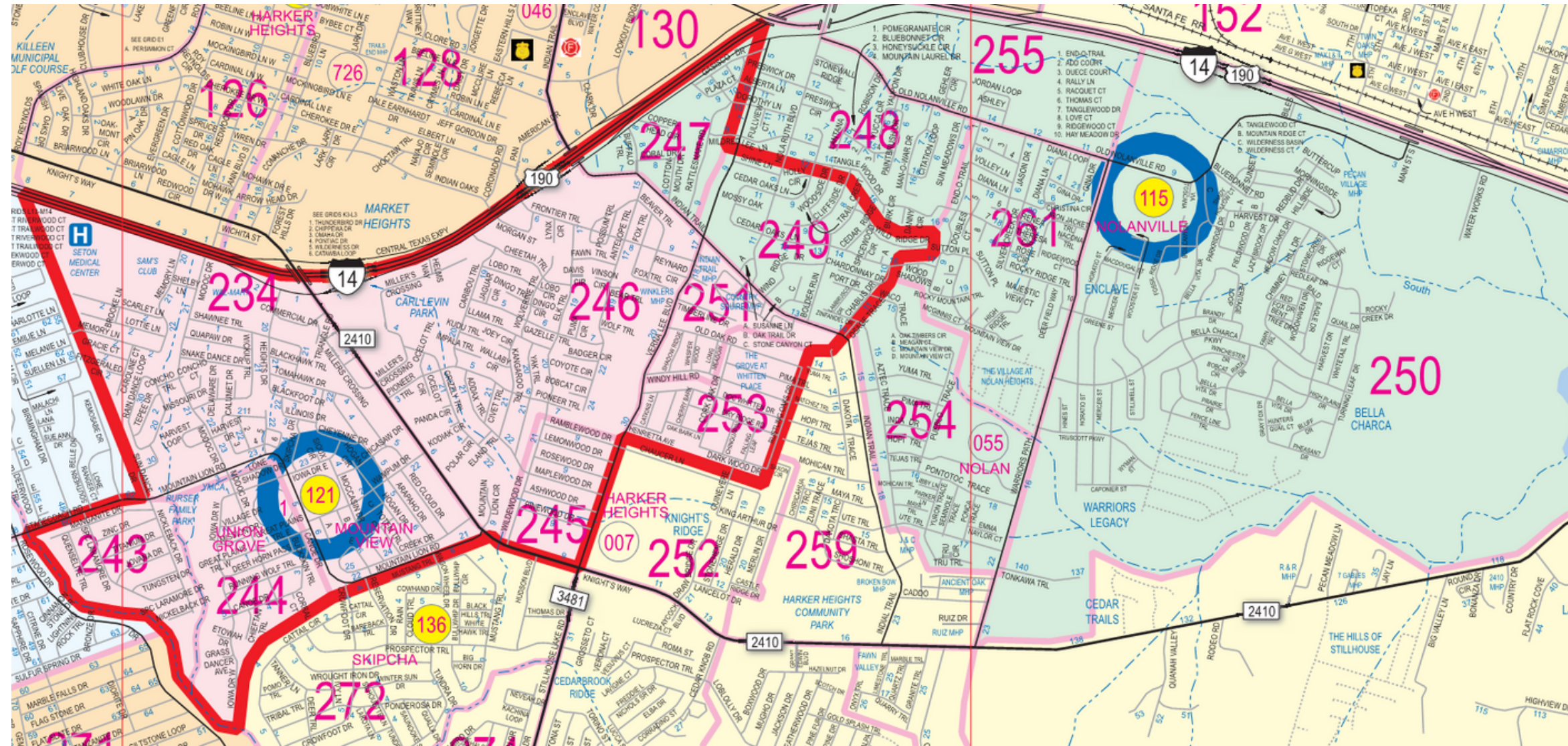


Proposed Elementary School Rezoning

- Only Nolanville and Mountain View Elementary Schools affected.
- The proposal moves approximately 84 students



NOLANVILLE ES TO MOUNTAIN VIEW ES





Proposed Elementary Rezoning

	TOTAL	MVES	NES
School Year 2023-2024 Maximum Enrollment	1,393	742	651
Building Capacity	1,630	944	686
School Year 2023-2024 Available Capacity	237	202	35
School Year 2024-2025 Projected Enrollment	1,393	826	567
Building Capacity	1,630	944	686
School Year 2024-2025 Est. Available Capacity	237	118	119

Grandfathering Provision

CURRENT 3RD-4TH & 6TH-7TH GRADERS

Grandfathering will be approved for students currently enrolled in 3rd-4th grade and 6th-7th grade. Grandfathering forms will be accepted between **February 27, 2024** and **April 9, 2024**.

TRANSPORTATION

Parents will be responsible for transportation to and from school – district transportation will not be provided for grandfathered or transferring students. District Transportation will be provided for all Middle School STEM students.

SPECIAL PROGRAMS

Special program changes will be addressed separately after a rezoning plan is approved.

WHAT HAPPENS NEXT



GATHER FEEDBACK

All feedback will be shared with the Board of Trustees.



PRESENT TO BOARD

District administration will present the community feedback at the February 13th Board meeting.



COMMUNICATION

Once the Board of Trustees has approved the new zones, affected students will be informed.

QUESTIONS:

KISDrezoning@killeenisd.org

<https://www.killeenisd.org/rezoning>

