

## Cloud Construction

## Clifton Park/Bellaire ES Consolidation

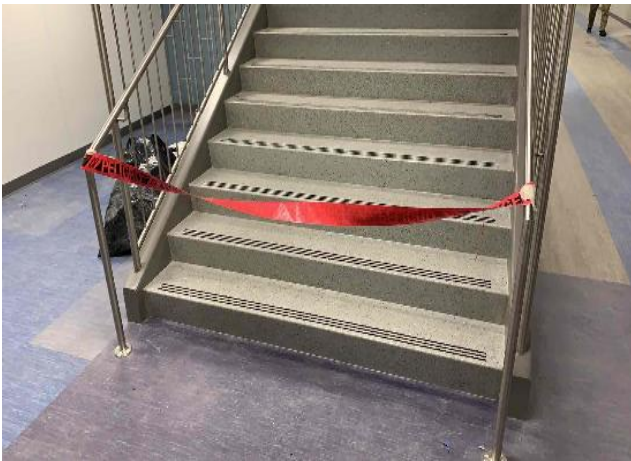
Monthly Progress Report - March 2021



Certificate of Occupancy received.



Interior: Replacement plastic laminate doors have arrived and are installed.



Interior: Final terrazzo stair pieces delivered and installed.



Interior: Remaining building signage installed.

### This Month's Major Activities:

- Exterior: Final punch list items being completed.
- Interior: Replacement plastic laminate doors installed
- Interior: Final terrazzo stair install.
- Interior: All inspections passed.
- Interior: Certificate of Occupancy.

### Next Month's Major Activities:

- Exterior: Removal of portables to finish fencing.
- Interior: Furniture delivery
- Interior: Punch list items in progress.
- Interior: Final cleaning.

Design Percent Complete - 100%

Construction Percent Complete - 94.3%