

## Bartlett Cocke Construction

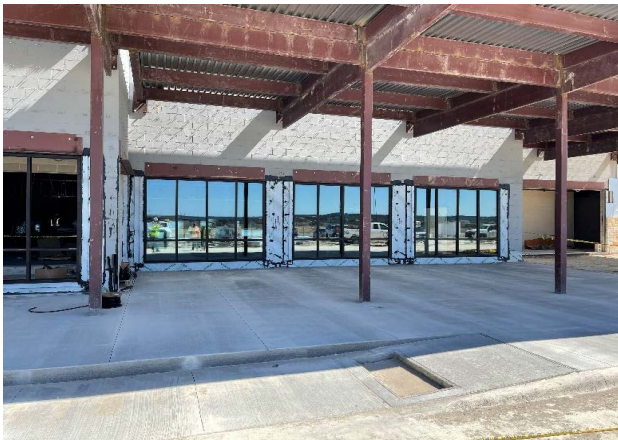
## Elementary School No. 36 Monthly Progress Report - February 2021



Exterior: Playground canopies and exterior stone veneer.



Exterior: Rear paving around the building poured.



Interior: Store front windows at front of school installed.



Interior: Hallway wall tile has begun install.

### **This Month's Major Activities:**

- Exterior: Stone veneer moving around the building.
- Exterior: Front drive concrete poured along with the rear building entry.
- Exterior: Playground canopies and basketball court installed.
- Interior: Continue sheetrock and have started ceramic wall tile.
- Interior: Freezer & cooler installed.

### **Next Month's Major Activities:**

- Exterior: Continue stone veneer around building
- Exterior: Avadek canopies to begin around building.
- Exterior: Perimeter fencing and flatwork.
- Interior: Ceramic wall tiles in hallways.
- Interior: RTU start-up.
- Interior: Texture and paint continues throughout.

**Design Percent Complete - 100%**

**Construction Percent Complete - 60.1%**