



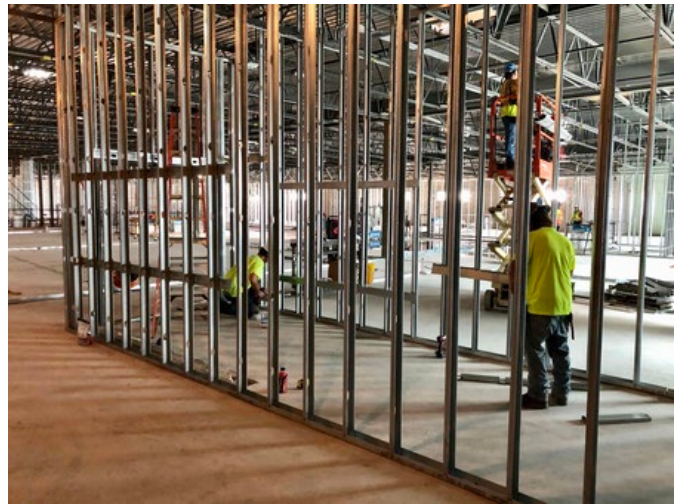
Building: Front entry canopy install.



Building: Rear drive and masonry install.



Section 4: Roof membrane install over main roof.



Section 2 & 3: Interior framing and blocking continues.

This Month's Major Activities:

- Section 5 & 6 roof membrane finishing out.
- Section 1 joists & decking
- Site: West parking lot & bus loop poured.
- Second floor framing continues with MEP overhead

Design Percent Complete – 100%

Next Month's Major Activities:

- Complete roof over Section 1
- Complete canopies and steel work
- Interior framing on 2nd floor
- Begin sheet rock in Section 2 & 3 on first floor.

Construction Percent Complete – 52.24%