



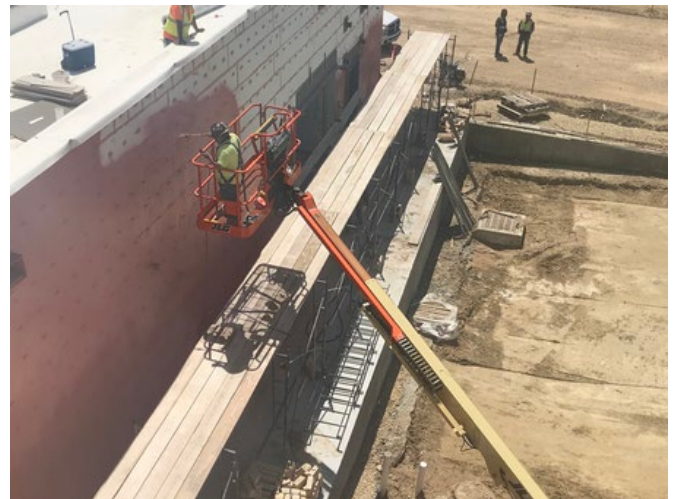
**Building:** Overall final 2<sup>nd</sup> floor roof deck being installed



**Building:** Stone install on the East side



**Site:** South side parking lot prep work for paving.



**Building:** Weatherproofing entire exterior

**This Month's Activities:**

- Begin stone work exterior
- Complete roofing on Area 4, café & kitchen
- First floor interior wall framing & bracing

**Percentage Design Complete: 100%**

**Next Month's Activities:**

- Concrete pour south parking lot
- Roofing continuing low roof west side
- Continue 2<sup>nd</sup> floor interior wall framing and bracing
- Continue with waterproofing and stone.

**Percentage Construction Complete: 40%**