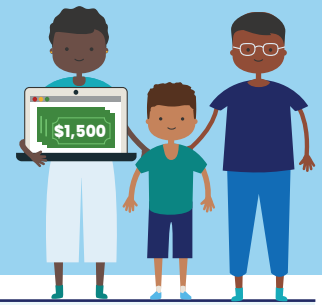




Parent-Directed Special Education Services (PDSSES)

Application Process for Parents



What can I do before the application window opens?

- Go to PDSSES.TEA.TEXAS.GOV and sign up to receive email updates about the PDSSES program - including how and when to apply.
- Create a My SPEDTex account on the SPEDTex website. You will need to create an account in order to apply. Click on "Create Account/Sign in" to create an account.
- Check to make sure your child is eligible - visit the PDSSES Eligibility Page.

2025

FEB
3rd

Application window
OPENS at 8:00AM CST:



What do I do when the application window opens?

- You can start the application process by clicking on the "Apply Now" button on PDSSES.TEA.TEXAS.GOV or go directly to the SPEDTex website and login to your My SPEDTex account by clicking on "Create Account/Sign in".
- Once logged in to your My SPEDTex account click on the "PDSSES Parent Portal" button. Note: your My SPEDTex account will also be your PDSSES login.
- Follow the steps online to submit your application(s).
- Visit the PDSSES Parent Portal FAQs for additional help.

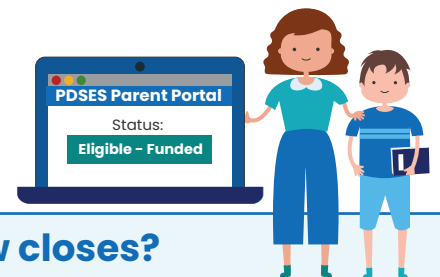


If your student **recently enrolled in a Texas public school** or had an **initial admission, review, and dismissal (ARD) meeting after October 1st** of the current school year, please be prepared to upload eligibility documentation when you apply.

2025

MARCH
31st

Application window
CLOSES at 5:00PM CST:



What can I expect after the application window closes?

- Applications will be processed in the order they were received.
- Parents will receive status updates by email and can also check their status on the PDSSES Parent Portal.
- If you uploaded eligibility documentation during the application process, your status might change to "In Review" - the PDSSES team will review and make a determination.
- Parents of eligible students will receive an "Eligible Student" email with information about how to access their PDSSES account and next steps.
- If students are found not eligible, parents can appeal until the last Friday in October of the year they applied, or reapply the following school year.



PDSSES.TEA.TEXAS.GOV

More Information & Help:

- Email: PDSSESHelp@Region10.org
- Phone: 1-855-773-3839