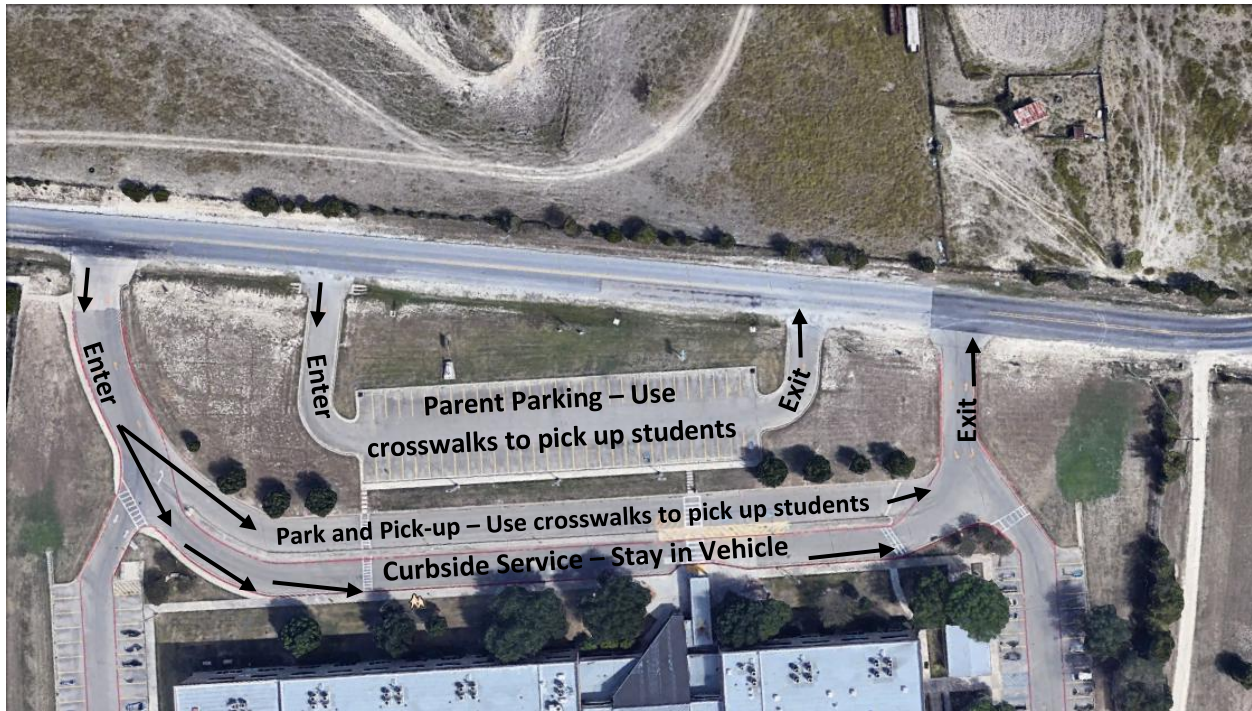


# New Nolanville Dismissal Procedures 2018-2019



*Ariel view of the front of Nolanville Elementary School*

## **Park and Pick-up**

- **The curb furthest from the school is designated “Park and Pick-up.”**
  - Parents will use crosswalks to pick up students.
  - Please note staff will not walk students to vehicles that are parked in “Park and Pick-up.”

## **Curbside Service**

- **The curb closest to the school is designated “Curbside Service.” Students will be delivered to your car. Only parents who are driving through will utilize curbside dismissal.**
  - Procedures for Curbside:
    - Each family will receive a pocket envelope to keep in your vehicle for pickup.
    - When you pull up in “Curbside Service,” give your pocket envelope with your ID inside it to the runner.
    - The runner will verify your ID card with the emergency contact information
    - The runner delivers your child, places them in the car, and returns the pocket envelope and ID.
    - Thank you for bringing the pocket ID to dismissal daily.
- **To ensure safe and efficient dismissal, cars without the pocket envelope will need to park and provide ID to the teacher before picking up your child.**

With any new procedure, we ask for your patience as we work out any kinks. After the first week or so, the procedure will become more and more efficient. With this procedure in place, there will be no reason to arrive early for the ultimate parking spot on the curb. Each car will be loaded from the curb where parking will not be permitted.